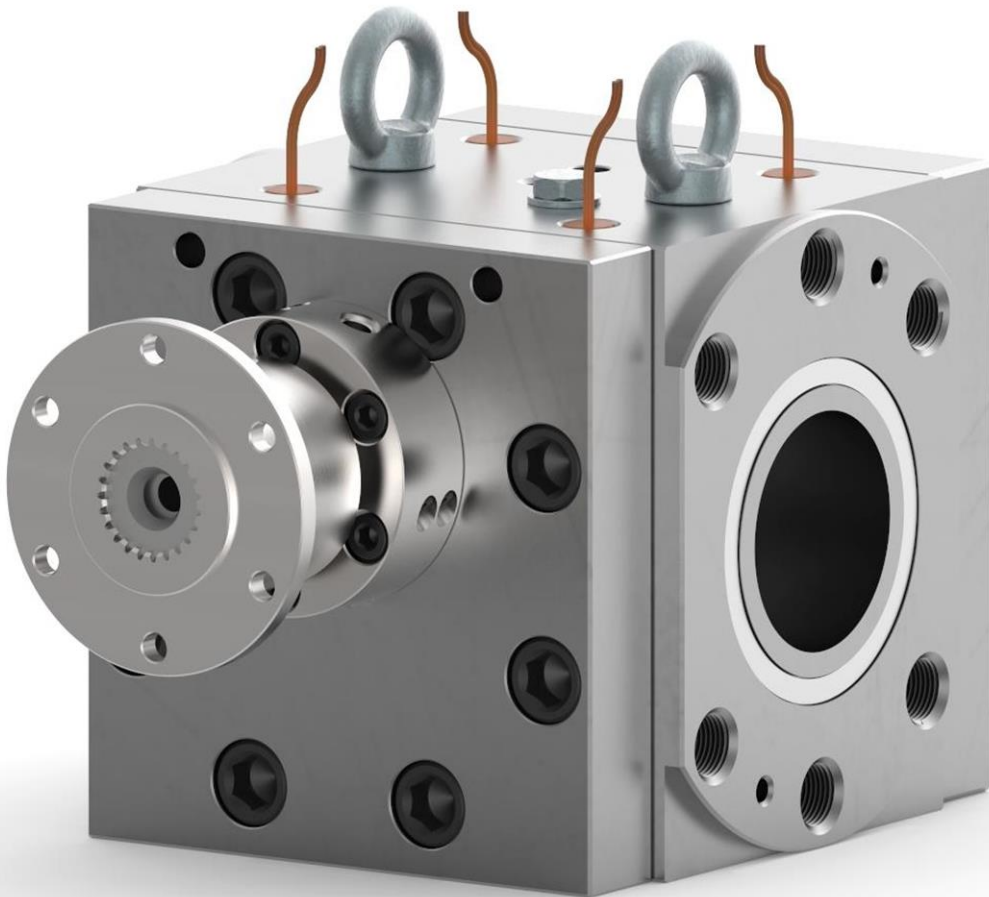


# Extrusion gear pumps



## Melt pumps

PAE Series





Extrusion process requires reliable gear pumps to build melt pressure. The melt pump can be used to maintain a consistent pressure at the die or to compensate for pressure loss and fluctuation of a filtration system.

**The PAE Series Extrusion Gear Pumps** are specifically designed for these applications.

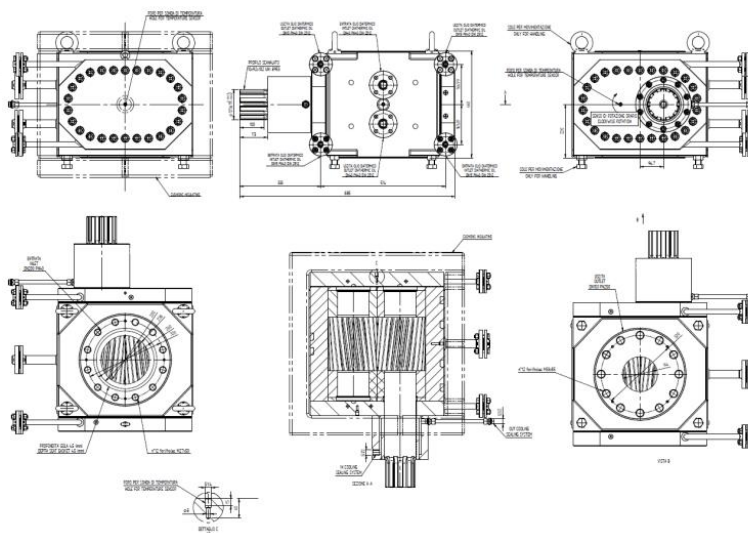
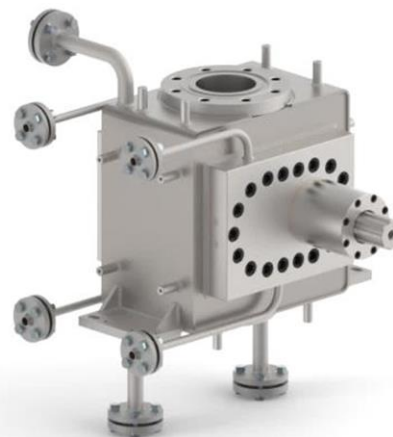
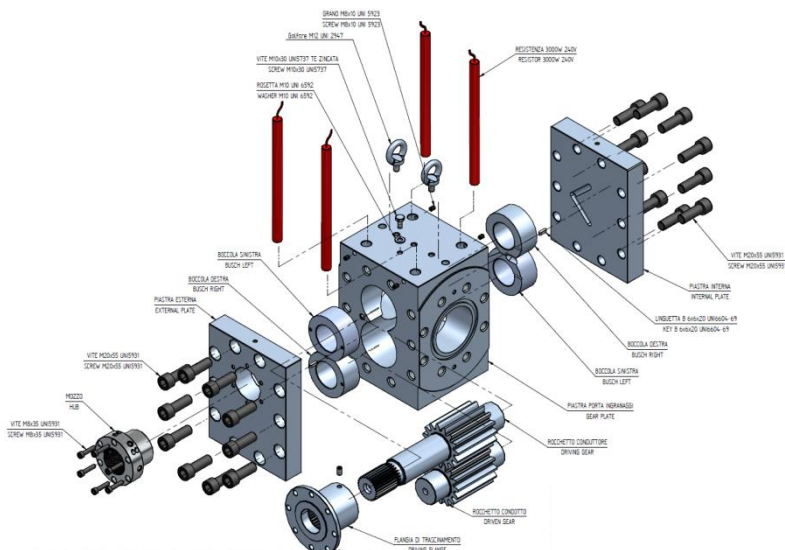
Rotating parts, fully made of core tempered **High Speed Steel**, make PAE series suitable for melts with abrasives particles at **temperatures up to 350°C** and discharge **pressures up to 350 bar**. Specifically engineered are available in order to reach 500 bar pressures.

On demand pumps can be supplied with comprehensive electrical or fluid heating systems. Externally the pumps can be insulated and enclosed in stainless steel housing or with quick-removable insulation. On demand, full set of instruments, accessories and gauges is available for pump/heating system control.

Size – displacement	Comparison	Maximum capacity in [kg/h]	
PAE Series [cc/rev]	Equivalent size	Polypropylene (sg 0,73) 200.000 cP	Polyester (sg 1,15) 150.000 cP
5	-	70	86
10	28/28	130	172
15	-	230	258
30	Close to 36/36	301	396
50	Close to 45/45	452	597
90	56/56	752	925
170	70/70	1.230	1.462
370	90/90	2.210	2.538
718	110/110	3.790	4.206
1.000	-	4.210	6.140
1.500	140/140	6.780	7.298
2.000	-	8.870	9.210
2.500	-	10.420	10.980
3.200	180/180	12.240	12.680

Data subject to change based on viscosity and relevant RPM

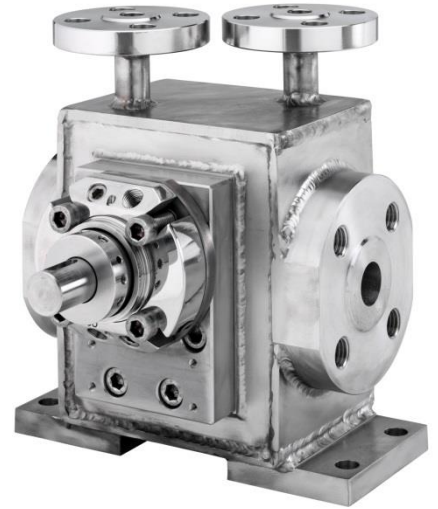
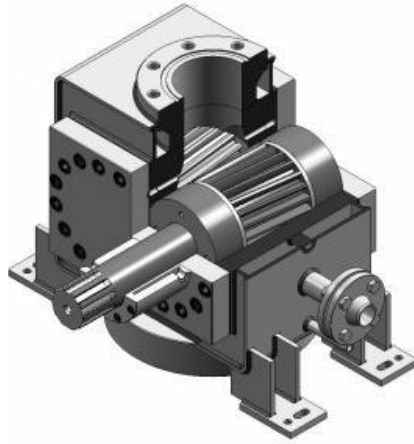
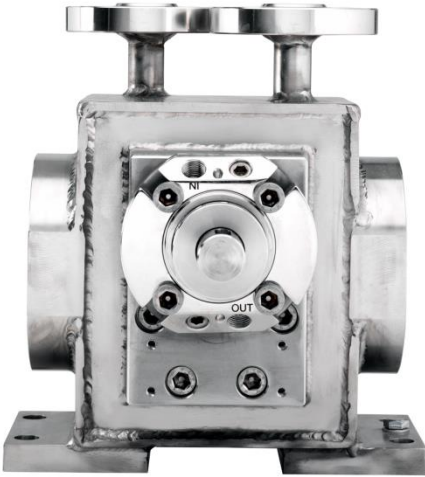
Data and pictures refer to the date of printing. It is forbidden any use, also partial, of this document without MVV written approval  
Data subject to revision without prior notice.



Clockwise rotation as standard  
Typical drawings

Technical Specifications	
Housing, gears & bushings	HSS High speed tool steel/High grade alloys, nitriding steel
Drive shaft	HSS steel/High grade alloys, nitriding steel
Viscosity	Up to 30.000.000 cP
Inlet pressure	Up to 120 bar
Outlet pressure	Up to 350 bar
Temperature	Up to 350 °C
Flanges	Both DIN and ANSI based on customer requirements and process parameters

Sealing system	
Packing Arrangements	PTFE packing, PTFE or Grafoil rings
Labyrinth seal	Viscoseal
Others	
Product Options	Highly engineered bespoke design, electric cartridge, special clearances, counterclockwise rotation, oil / vapour chamber, surface treatments, insulation, etc.
Certifications	CE; ATEX II 2G Tx



High efficiency

Pulseless

Powerful

# MVV Polymer Production PAE Series

Over 1 million of gear pump installed in several industrial applications in more than 70 years of history, make MVV a proven manufacturer of External Gear Pumps.

Expertise on critical applications, competence and R&D on special materials, unparalleled machining ability enables MVV to provide the right solution in extreme metering conditions.

## Fields of application and chemicals

Pumps can be used both for extraction from reactors as well as boosting through the system of the following: Polyol, Isocyanate, Silicone, Glues and other high-viscosity plastic melts with abrasive content too, up to 350 °C.

SYNTHETIC FIBERS

MELTED GLUE PUMPS

POLYMER EXTRACTION

BOOSTER PUMPS

FINISHING PUMPS

TEXTILE PUMPS

Company ISO 9001:2008 Certified



Via Sant'Antonio 2  
I-31010 Orsago TV  
[www.mvv.it](http://www.mvv.it) info@mvv.it

EXTRUSION PUMPS

SPINNERETES

STATIC MIXERS

SPINNING BEAMS

SPARE PARTS

SPECIAL PARTS